

WORLD'S MOST  
EFFICIENT BACKHOE



**THE TRUE ALL ROUNDER**

**HD100**



**HD 100**

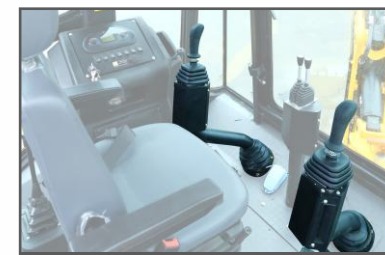


**HD 100**

**WORLD CLASS CABIN COMFORT**



Tilttable Steering



Pilot Controlled Joystick Operation



A/C Option



Kick Down Function For Torque Management

**EASY TO MAINTAIN AT LOW COST**



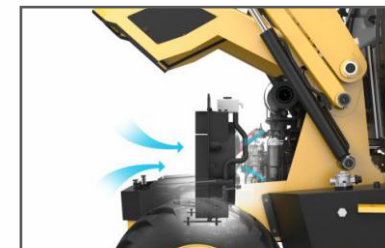
Engine high temperature Warning Alarm



Auto Greasing System (Optional)



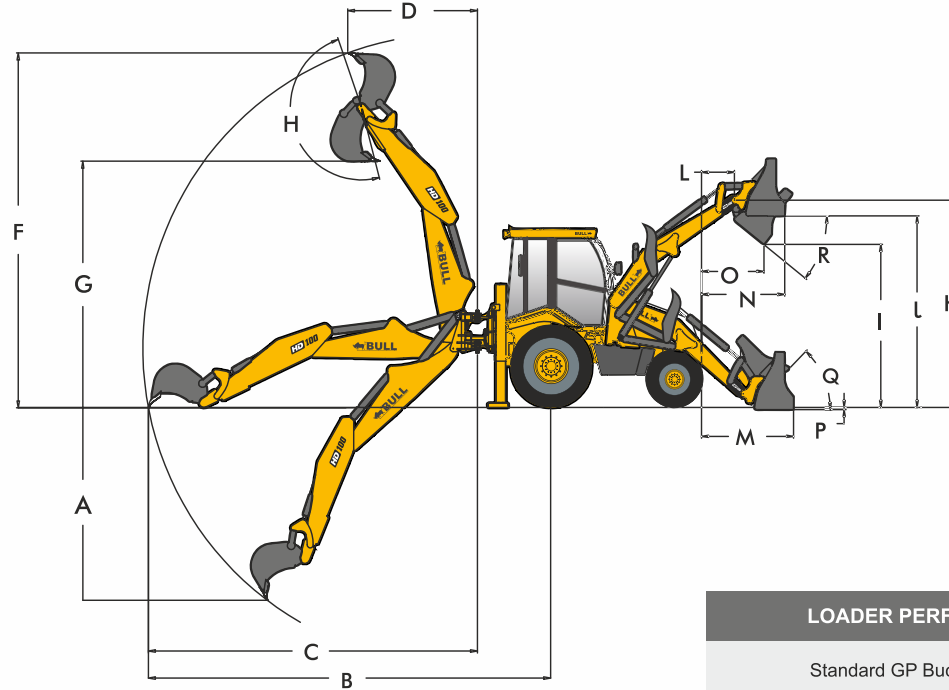
Front Opening Bonnet



Single layer Radiator/ Cooler: Easy to clean

ENGINE	PERKINS 1104D-44TA, EU NRMM 97/68/ EC EURO III A Diesel Engine (4400CC) Gross Power: <b>74.5 kW (100HP) at 2200 RPM</b> Gross Torque: <b>410Nm@1400 RPM</b>	PERKINS 1104D-44TA, EU NRMM 97/68/ EC EURO III A Diesel Engine (4400CC) Gross Power: <b>74.5 kW (100HP) at 2200 RPM</b> Gross Torque: <b>410Nm@1400 RPM</b>																																															
TRANSMISSION	<b>CARRARO</b> Synchro - Shuttle Transmission with integral torque converter	<b>ZF</b> Power Shift Transmission with integral torque converter																																															
STEERING	Power Steering	Power Steering																																															
ELECTRICALS	12V Battery System (180Ah)	12V Battery System (180Ah)																																															
TYRES	<b>FRONT 2WD</b> - 9.00X16 - 16PR <b>4WD</b> - 12.5/80X18 - 12PR <b>REAR</b> Industrial (Standard) : 16.9X28 - 12PR Optional : 19.5LX24 - 12PR Heavy Duty : 14X25 - 20PR	<b>FRONT 4WD</b> - 12.5/80X18 - 12PR <b>REAR</b> Industrial (Standard) : 16.9X28 - 12PR Optional : 19.5LX24 - 12PR Heavy Duty : 14X25 - 20PR																																															
SPEED	Forward Max : <b>41 Km/Hr</b> Reverse Max : <b>9.35 Km/Hr</b> (2nd Gear Recommended)	Forward Max : <b>37 Km/Hr</b> Reverse Max : <b>22 Km/Hr</b> (3rd Gear Recommended)																																															
HYDRAULICS	Hydraulics : <b>3480 p.s.i (240 bar)</b> Pump flow : <b>145 LPM @ 2200 RPM</b> : <b>157 LPM @ high RPM</b> Pump Type : <b>GEAR PUMP</b>	Hydraulics : <b>3480 p.s.i (240 bar)</b> Pump flow : <b>145 LPM @ 2200 RPM</b> : <b>157 LPM @ high RPM</b> Pump Type : <b>GEAR PUMP</b>																																															
WEIGHT	<b>8200 Kgs</b> with Standard <b>GP</b> Bucket option	<b>8200 Kgs</b> with Standard <b>GP</b> Bucket option																																															
SERVICE CAPACITIES																																																	
	<table border="1"> <thead> <tr> <th></th> <th>System</th> <th>Service</th> </tr> </thead> <tbody> <tr> <td>Hydraulic Tank</td> <td>120 Ltr</td> <td>100 Ltr</td> </tr> <tr> <td>Fuel Tank</td> <td>115 Ltr</td> <td>115 Ltr</td> </tr> <tr> <td>Engine Coolant</td> <td>17 Ltr</td> <td>15 Ltr</td> </tr> <tr> <td>Engine Oil</td> <td>13 Ltr</td> <td>13 Ltr</td> </tr> <tr> <td>Transmission</td> <td>19.5Ltr</td> <td>13 Ltr</td> </tr> <tr> <td>Rear Axle</td> <td>17 Ltr</td> <td>17 Ltr</td> </tr> <tr> <td>4WD Front Axle</td> <td>10 Ltr</td> <td>10 Ltr</td> </tr> </tbody> </table>		System	Service	Hydraulic Tank	120 Ltr	100 Ltr	Fuel Tank	115 Ltr	115 Ltr	Engine Coolant	17 Ltr	15 Ltr	Engine Oil	13 Ltr	13 Ltr	Transmission	19.5Ltr	13 Ltr	Rear Axle	17 Ltr	17 Ltr	4WD Front Axle	10 Ltr	10 Ltr	<table border="1"> <thead> <tr> <th></th> <th>System</th> <th>Service</th> </tr> </thead> <tbody> <tr> <td>Hydraulic Tank</td> <td>120 Ltr</td> <td>100 Ltr</td> </tr> <tr> <td>Fuel Tank</td> <td>115 Ltr</td> <td>115 Ltr</td> </tr> <tr> <td>Engine Coolant</td> <td>17 Ltr</td> <td>15 Ltr</td> </tr> <tr> <td>Engine Oil</td> <td>13 Ltr</td> <td>13 Ltr</td> </tr> <tr> <td>Transmission</td> <td>19.5Ltr</td> <td>13 Ltr</td> </tr> <tr> <td>Rear Axle</td> <td>17 Ltr</td> <td>17 Ltr</td> </tr> <tr> <td>4WD Front Axle</td> <td>10 Ltr</td> <td>10 Ltr</td> </tr> </tbody> </table>		System	Service	Hydraulic Tank	120 Ltr	100 Ltr	Fuel Tank	115 Ltr	115 Ltr	Engine Coolant	17 Ltr	15 Ltr	Engine Oil	13 Ltr	13 Ltr	Transmission	19.5Ltr	13 Ltr	Rear Axle	17 Ltr	17 Ltr	4WD Front Axle	10 Ltr
	System	Service																																															
Hydraulic Tank	120 Ltr	100 Ltr																																															
Fuel Tank	115 Ltr	115 Ltr																																															
Engine Coolant	17 Ltr	15 Ltr																																															
Engine Oil	13 Ltr	13 Ltr																																															
Transmission	19.5Ltr	13 Ltr																																															
Rear Axle	17 Ltr	17 Ltr																																															
4WD Front Axle	10 Ltr	10 Ltr																																															
	System	Service																																															
Hydraulic Tank	120 Ltr	100 Ltr																																															
Fuel Tank	115 Ltr	115 Ltr																																															
Engine Coolant	17 Ltr	15 Ltr																																															
Engine Oil	13 Ltr	13 Ltr																																															
Transmission	19.5Ltr	13 Ltr																																															
Rear Axle	17 Ltr	17 Ltr																																															
4WD Front Axle	10 Ltr	10 Ltr																																															

OPTIONS	Ditch Cleaning Bucket   Square Hole Bucket   Rock breaker   Ripper tooth   Trench bucket   Taper Ditching bucket   Multipurpose 6 in 1 bucket   Telescopic Dipper
---------	---



EXCAVATOR PERFORMANCE	100 HP		100 HP	
	Retraction STD	Telescopic Dipper (option)	Retraction STD	Telescopic Dipper (option)
Standard GP Bucket Capacity	0.27 cu.m		0.27 cu.m	
A Maximum DIG depth	4.60 m	5.60 m	4.60 m	5.60 m
B Reach Ground Level to Rear wheel center	6.81 m	7.91 m	6.81 m	7.91 m
C Reach at Ground level to slew center	5.50 m	6.60 m	5.50 m	6.60 m
D Reach at full height to slew center	2.85 m	3.56 m	2.85 m	3.56 m
F Maximum working height	6.08 m	6.77 m	6.08 m	6.77 m
G Maximum Load over Height	4.38 m	5.02 m	4.38 m	5.02 m
H Bucket Rotation power	188°		188°	
Bucket Tear out force	6851 Kgf		6851 Kgf	
Dipper Tear out force	3316 Kgf		3316 Kgf	
Lift Capacity to bucket pivot at full reach (without bucket fitted)	1400 Kgs		1400 Kgs	

LOADER PERFORMANCE	100HP	100HP
Standard GP Bucket Capacity	1.26 cu.m	1.26 cu.m
I Dump Height	2.96 m	2.96 m
J Load Over Height	3.39 m	3.39 m
K Pin Height	3.61 m	3.61 m
L Pin Forward Reach	0.42 m	0.42 m
M Reach at Ground	1.60 m	1.60 m
N Reach at full height	1.42 m	1.42 m
O Reach at full Height bkt Dumping	1.1 m	1.1 m
P Below ground level DIG Depth	0.08 m	0.08 m
Q Roll back at Ground	50°	50°
R Dump Angle	45°	45°
Bucket Break-out Force	8793 Kgf	8793 Kgf
Loader Arm Break-out Force	5642 Kgf	5642 Kgf
Pay Load	2000 Kgf	2000 Kgf
Lifting capacity at loader arm hook pin	2600 kgf	2600 kgf

WORLD'S BEST COMPONENTS

96 HP Proven Kirloskar Engine  
100 HP Perkin's Engine

Carraro (Italy) Transmission  
& ZF (German) Transmission

Carlisle Brake  
(U.S.A)

World Famous  
Hydro Control / Walvoil  
(Italy) Valve

AKG (German)  
Radiator Cooler

Casappa (Italy) pump

Carraro (Italy) Axle

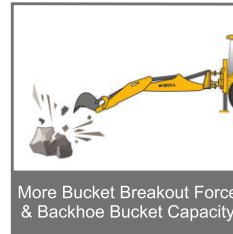


## MULTIPLE LOADER BUCKET OPTIONS



## SALIENT FEATURES

All machines come with advanced features that enhance their performance, productivity and reliability to the highest level



More Bucket Breakout Force & Backhoe Bucket Capacity



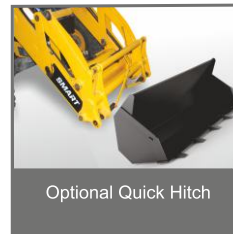
Heavy Weight Champion



Most fuel efficient backhoe in the world in its class\*



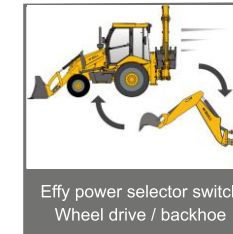
The Tallest Dumping Backhoe Loader in the World



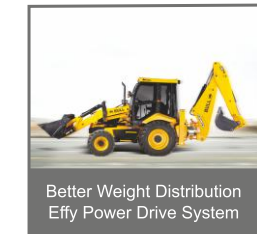
Optional Quick Hitch



Powder Coating : Scratch Resistant Painting



Effy power selector switch Wheel drive / backhoe



Better Weight Distribution Effy Power Drive System

## EASY TO MAINTAIN AT LOW COST

An Operator friendly machine that facilitates and alerts the operator for regular maintenance.



Engine high temperature Warning Alarm



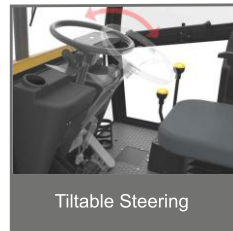
Front Opening Bonnet



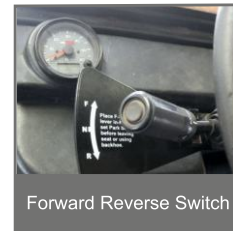
Single layer Radiator/ Cooler: Easy to clean

## WORLD CLASS CABIN COMFORT

Incorporated with features for the practical needs of the operator for uninterrupted fatigue free working for longer hours.



Tiltable Steering



Forward Reverse Switch



A/C Option



Joystick with Selector Switch

## Our other range of products



**BULL MACHINES PVT.LTD,**  
Trichy Road, Coimbatore. INDIA  
 +91 98422 87770  
 sales@bullmachine.com  
 exports@bullmachine.com

Dealer

**BR**AVO EQUIPMENT LTD

+230 420 44 00  
 www.bravo-world.com  
 Royal Road, Camp Ithier, Flacq

